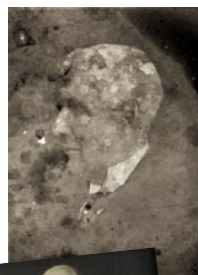
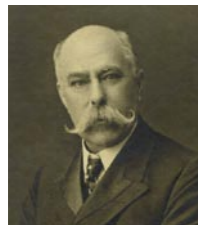


A selection of photographs accompanies the Presidents and Secretaries listed on pages 58 to 62. In accordance with Institute policy, only Queen's Honours and Decorations and CII post-nominal designations are shown.

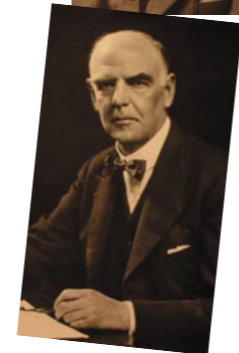


G.C. Morant
S.J. Pipkin
O. Morgan Owen
C.E. Noverre

- 1907 – 1908 G. C. Morant *Commercial Union*
- 1908 – 1909 E. Baumer *Sun Fire*
- 1909 – 1910 S. J. Pipkin FCII *Atlas*
CII President 1905 – 1906
- 1910 – 1911 O. Morgan Owen FCII *Alliance*
CII President 1911 – 1912
- 1911 – 1912 C. E. Noverre JP *Norwich Union Fire*
CII President 1917 – 1918
- 1912 – 1913 G. E. Mead FCII *Sun*
CII President 1914 – 1915
- 1913 – 1914 J. Powell FCII *Assurance Union*
CII President 1919 – 1920
- 1914 – 1915 W. E. Blake FCII *London & Lancashire*
- 1915 – 1916 R. M'Connell FCII *Royal*
CII President 1926 – 1927
- 1916 – 1917 T. M. E. Armstrong FCII *Commercial Union*
- 1917 – 1918 T. B. Ponsonby FCII *Alliance*
- 1918 – 1919 J. Robertson FCII *Northern*
- 1919 – 1920 W. E. Gray FCII *Employers' Liability*
CII President 1921 – 1922
- 1920 – 1921 H. Mann FCII *Commercial Union*
- 1921 – 1922 Sir Arthur Worley Bt CBE FCII *North British*
- 1922 – 1923 Sir Arthur Worley Bt CBE FCII *North British*
CII President 1923 – 1924
- 1923 – 1924 R. Y. Sketch FCII *Phoenix and Norwich Union Fire*
CII President 1927 – 1928
- 1924 – 1925 G. W. Reynolds FCII *Guardian*
CII President 1929 – 1930
- 1925 – 1926 C. H. Falloon FCII *Atlas*
CII President 1931 – 1932
- 1926 – 1927 W. W. Otter-Barry FCII *Sun*
CII President 1932 – 1933
- 1927 – 1928 C. Hendry FCII *London & Lancashire*
CII President 1934 – 1935
- 1928 – 1929 Sir Joseph Burn KBE *Prudential*
- 1929 – 1930 H. Lewis FCII *Commercial Union*
CII President 1935 – 1936
- 1930 – 1931 G. L. Lambert FCII *North British*

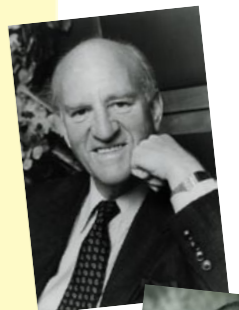


The President's Badge of Office contains gold leaves engraved with the names and dates of each President.



T.B. Ponsonby
Sir Percy G. McKinnon
N. Dixey
Sir Walter Barrie

- 1931 – 1932 W. A. Workman *Legal & General*
CII President 1941 – 1942
- 1932 – 1933 N. M. Walker FCII *British General*
CII President 1939 – 1940 and 1940 – 1941
- 1933 – 1934 K. K. Peters *Northern*
CII President 1937 – 1938
- 1934 – 1935 Sir Percy G. Mackinnon FCII *Lloyd's*
- 1935 – 1936 Sir William P. Elderton KBE FCII *Equitable Life*
CII President 1942 – 1943
- 1936 – 1937 W. A. Hurst OBE FCII *Car & General and Motor Union*
- 1937 – 1938 A. G. Sweet FCII *Guardian*
- 1938 – 1939 Sir Arthur S. Rogers FCII *London & Lancashire*
- 1939 – 1940 A. MacDonald CBE FCII *Royal Exchange*
- 1940 – 1941 A. MacDonald CBE FCII *Royal Exchange*
CII President 1944 – 1945
- 1941 – 1942 Sir Arthur E. Morgan FCII *London*
CII President 1947 – 1948
- 1942 – 1943 W. H. Walker ACII *Union*
- 1943 – 1944 Sir Edward Ferguson FCII *Phoenix*
CII President 1948 – 1949
- 1944 – 1945 Sir John Makins *Commercial Union*
- 1945 – 1946 N. Dixey *Lloyd's*
- 1946 – 1947 C. H. Leach *Northern*
- 1947 – 1948 J. W. Berry *Royal*
- 1948 – 1949 E. C. T. Carden FCII *Alliance*
CII President 1950 – 1951
- 1949 – 1950 H. Routh FCII *Eagle Star*
CII President 1952 – 1953
- 1950 – 1951 J. W. J. Levien *Atlas*
- 1951 – 1952 J. A. Miller DSO *Sun*
- 1952 – 1953 G. W. Bridge FCII *Legal & General*
CII President 1954 – 1955
- 1953 – 1954 W. L. Grant FCII *Pearl*
CII President 1964 – 1965
- 1954 – 1955 R. S. Thorp FCII *Prudential*
CII President 1957 – 1958
- 1955 – 1956 Sir Walter Barrie FCII *Lloyd's*
CII President 1962 – 1963



R.W. Sturge
R.K. Bishop
J.A.S. Neave
J.R. Redfearn



B.P.D. Kellett
R.J. Taylor
W.R. White-Cooper
P.J. Rhodes
R.E. Brown

- 1956 – 1957 F.R. Norton FCII *Guardian*
CII President 1958 – 1959
- 1957 – 1958 C.E. Keysell MBE *Employers' Liability*
- 1958 – 1959 A.G.M. Batten FCII *Alliance*
CII President 1965 – 1966
- 1959 – 1960 H.T. Silversides FCII *Yorkshire*
CII President 1955 – 1956
- 1960 – 1961 G.G. Beamish FCII *London Assurance*
CII President 1963 – 1964
- 1961 – 1962 T.A.E. Layborn CBE *C. T. Bowring and Layborn*
- 1962 – 1963 A.F. O'Shea ACII *Royal*
- 1963 – 1964 T.W. Haynes *Northern & Employers*
- 1964 – 1965 A.E. Sansom FCII *Iron Trades*
CII President 1967 – 1968
- 1965 – 1966 J.H. Ross FCII *Royal*
CII President 1966 – 1967
- 1966 – 1967 A.W. Grant OBE MC TD FCII *Ecclesiastical*
CII President 1970 – 1971
- 1967 – 1968 R.W. Sturge *Lloyd's*
- 1968 – 1969 D.F. Dunstan FCII *Victory*
- 1969 – 1970 Sir Francis Sandilands CBE *Commercial Union*
- 1970 – 1971 A.J. Watson ACII *Municipal Mutual*
- 1971 – 1972 E.R.H. Bowring MC *C. T. Bowring*
- 1972 – 1973 J.G. Henderson *Eagle Star*
- 1973 – 1974 J.H.J. Day FCII *Prudential*
- 1974 – 1975 R.K. Bishop FCII *Phoenix*
CII President 1979 – 1980 WCI Master 1990
- 1975 – 1976 Sir Henry Mance *Willis Faber & Dumas*
CII President 1977 – 1978
- 1976 – 1977 J.A.S. Neave CBE JP *Mercantile & General Re*
CII President 1983 – 1984 WCI Master 1984
- 1977 – 1978 E.D. Rainbow OBE FCII *Commercial Union*
- 1978 – 1979 J.R. Redfern *Robins Davies & Little*
CII President 1982 – 1983 WCI Master 1987
- 1979 – 1980 A.R. Matanle FCII *Phoenix*
- 1980 – 1981 P.H. Bartrum FCII *Sun Alliance*
CII President 1985 – 1986



The President's Award

The criteria for the ILL's President's Award are that the individual 'should have made an outstanding contribution to our workings and/or enhanced our Institute's image in the market and beyond'.

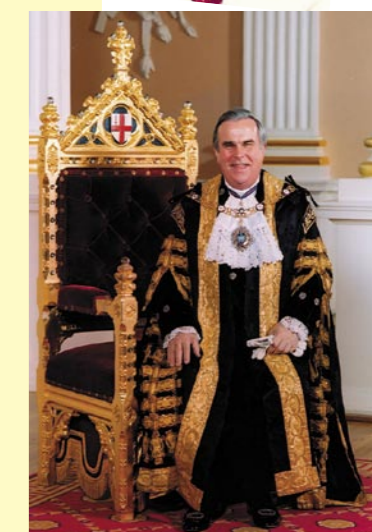
Recipients

- Cyril Hodge
- William Henson ACII
- James Heaney
- Norman Alderton FCII
- Laon Hulme OBE
- Ernest Marshall CSTJ OBE
- Michael Taylor
- Nicholas Stanbury FCII
- Terence Hayday FCII



C.N.F. Methven
D.R. Losse
P.G. Ward
J.M.P. Taylor
T.J.J. Carroll

- 1981 – 1982 B.V. Day OBE FCII *Ecclesiastical*
CII President 1984 – 1985 WCI Master 1995
- 1982 – 1983 T.J. Palmer CBE *Legal & General*
- 1983 – 1984 L.N. Marden FCII *Golding Stewart Wrightson*
CII President 1987 – 1988
- 1984 – 1985 C.M. Wigmore *Royal London Mutual*
- 1985 – 1986 D.V. Palmer ACII *Willis Faber*
WCI Master 1981
- 1986 – 1987 P.R. Bryant *Lloyd's*
- 1987 – 1988 P.H. Purchon ACII *Willis Corroon*
CII President 1990 – 1991 WCI Master 1998
- 1988 – 1989 J.Lock FCII *Mercantile & General Re*
- 1989 – 1990 B.P.D. Kellett FCII *Lloyd's*
CII President 1996 – 1997
- 1990 – 1991 R.J. Taylor FCII *Sun Alliance*
CII President 1992 – 1993 WCI Master 2005
- 1991 – 1992 W.R. White-Cooper FCII *Sedgwick*
- 1992 – 1993 P.J. Rhodes ACII *General Accident*
CII President 1995 – 1996
- 1993 – 1994 A.P.D. Lancaster *GAN*
WCI Master 2004
- 1994 – 1995 R.E. Brown FCII *Lloyd's*
CII President 1999 – 2000
- 1995 – 1996 H.M.J. Ritchie *Bowring Marsh & McLennan*
- 1996 – 1997 T.J. Brown *Royal & Sun Alliance*
- 1997 – 1998 C.N.F. Methven *Willis Corroon*
- 1998 – 1999 D.R. Losse *Benfield Greig*
WCI Master 2000
- 1999 – 2000 P.G. Ward FCII *Commercial Union*
- 2000 – 2001 J.M.P. Taylor *Lloyd's / Aon Group*
- 2001 – 2002 T.J.J. Carroll FCII *GE Frankona Re*
- 2002 – 2003 D.L. Mahoney *Aon Group*
- 2003 – 2004 D. Thornton ACII *Heath Lambert*
- 2004 – 2005 B.E. Masojada *Hiscox Group*
- 2005 – 2006 S.P. McGill ACII *Aon Group*
- 2006 – 2007 Alderman Sir David Brewer CMG FCII *Marsh*



D.L. Mahoney
D. Thornton
B.E. Masojada
S.P. McGill
Alderman Sir David Brewer who served as Lord Mayor of London during his Centenary Presidency.